

NOTES: UNLESS OTHERWISE SPECIFIED

1. WORKMANSHIP STANDARDS AND ACCEPTABILITY REQUIREMENTS SHALL MEET IPC-A-610 (LATEST VERSION).
2. THIS DOCUMENT AND RELATED ARTWORK ARE COMPUTER GENERATED. CHANGES ARE TO BE PERFORMED ON THE ORIGINAL DATABASE IN SECTION 383.
3. SOLDER COMPONENTS USING LEADED SOLDER, ITEM 3.
4. CLEAN SOLDER FLUX FROM BOARD SO THAT THERE IS NO DISCERNABLE RESIDUE.
5. MARK IN LOCATION SHOWN WITH 1.0 MINIMUM HIGH CHARACTERS THE DASH NUMBER, THE REV LETTER, AND THE SERIAL NUMBER "NXXXX" (WHERE N IS A VENDOR DESIGNATION LETTER ASSIGNED BY TMT AND XXXXX IS A UNIQUE 5 DIGIT SERIAL NUMBER FOR EACH PART. THE VENDOR DESIGNATION AND THE STARTING SERIAL NUMBER SHALL BE IN ACCORDANCE WITH THE VALUES PROVIDED IN THE PURCHASE ORDER).
6. FOR SCHEMATIC DIAGRAM SEE JPL DRAWING 10398554.
7. THIS PRINTED WIRING ASSEMBLY CONSISTS OF ONLY SURFACE MOUNT TECHNOLOGY.

REVISION HISTORY					
REV	DESCRIPTION	CAT	DWN	ENGR	
A	----- INITIAL RELEASE -----	II	-	-	SEE JPL DATA MANAGEMENT SYSTEM FOR APPROVAL SIGNATURES AND DATES
B	UPDATED NOMENCLATURE. ADDED MIRRORED CONFIGURATION.	II	D. PALMER	D. PALMER	

(SEE SEPARATE PARTS LIST)

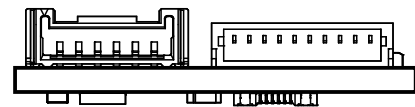
QTY REQD	ITEM NO	REFDES	DAI	PART OR IDENTIFYING NO	NOMENCLATURE OR DESCRIPTION	SPECIFICATION	MATERIAL OR NOTE
AR	AR	4		Sn63/Pb37	COPPER FOIL, 1 OZ.	J-STD-005A	3
AR	AR	3		ETHONE 50-100R CATALYST 9	INK, WHITE EPOXY	IPC-4781	5
1		2		10398555-2	PRINTED WIRING BOARD, ENCODER/HALL SENSOR BOARD		REV B
	1	1		10398555-1	PRINTED WIRING BOARD, ENCODER/HALL SENSOR BOARD		REV B

PARTS LIST

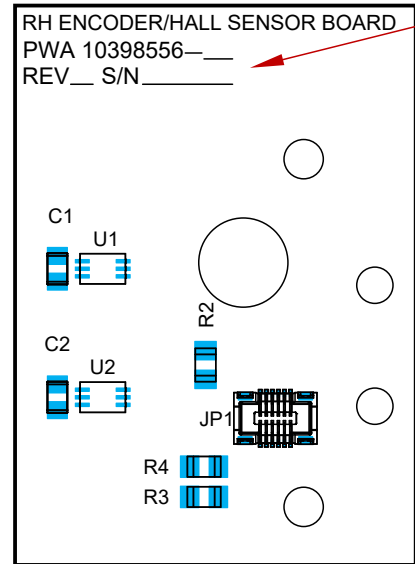
COPYRIGHT 2019 CALIFORNIA INSTITUTE OF TECHNOLOGY. GOVERNMENT SPONSORSHIP ACKNOWLEDGED.

DO NOT SCALE DRAWING
INTERPRET DEMENSIONING AND
TOLERANCING PER ASME Y14.5 2009
INTERPRET DWG PER ASME Y14.100

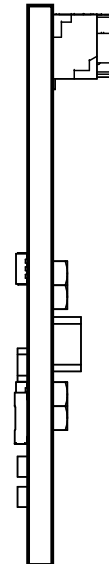
CONTRACT NO		JET PROPULSION LABORATORY	
DWN	D. PALMER	CALIFORNIA INSTITUTE OF TECHNOLOGY PASADENA, CA 91109	
ENGR	D. PALMER	TITLE	
SEE JPL DATA MANAGEMENT SYSTEM FOR APPROVAL SIGNATURES AND DATES		PRINTED WIRING ASSEMBLY, ENCODER/HALL SENSOR BOARD	
SIZE	DAI	DWG NO	REV
B	23835	10398556	B
SCALE:	2/1	UNCLASSIFIED	SHEET 1 OF 3



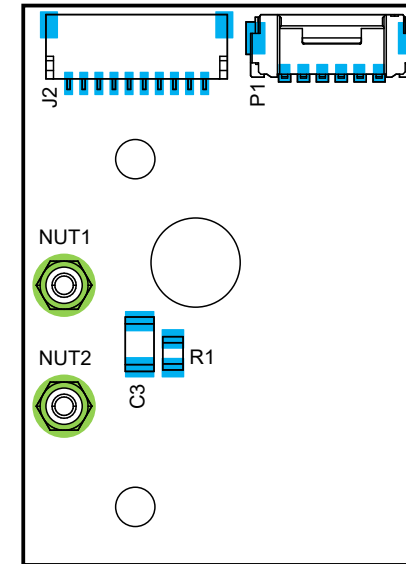
REFERENCE VIEW (Scale 2:1)



TOP ASSEMBLY (Scale 2:1)



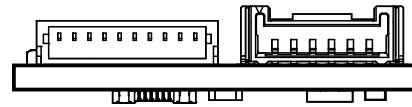
RIGHT SIDE (Scale 2:1)



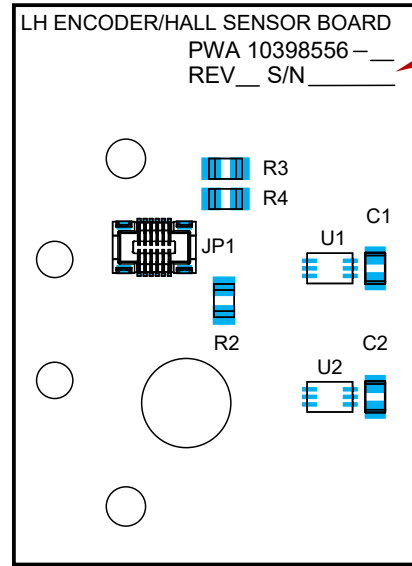
BOTTOM ASSEMBLY (Scale 2:1)

-1 CONFIGURATION

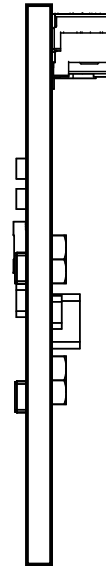
SIZE	DAI	DWG NO	REV
B	23835	10398556	B
SCALE:	2/1	UNCLASSIFIED	SHEET 2 OF 3



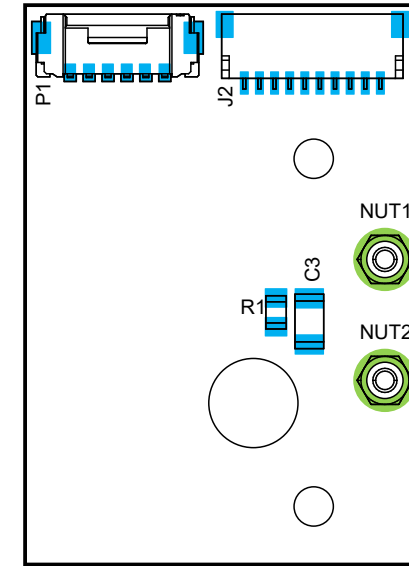
REFERENCE VIEW (Scale 2:1)



TOP ASSEMBLY (Scale 2:1)



RIGHT SIDE (Scale 2:1)



BOTTOM ASSEMBLY (Scale 2:1)

-2 CONFIGURATION

SIZE	DAI	DWG NO	REV
B	23835	10398556	B
SCALE:	2/1	UNCLASSIFIED	SHEET 3 OF 3